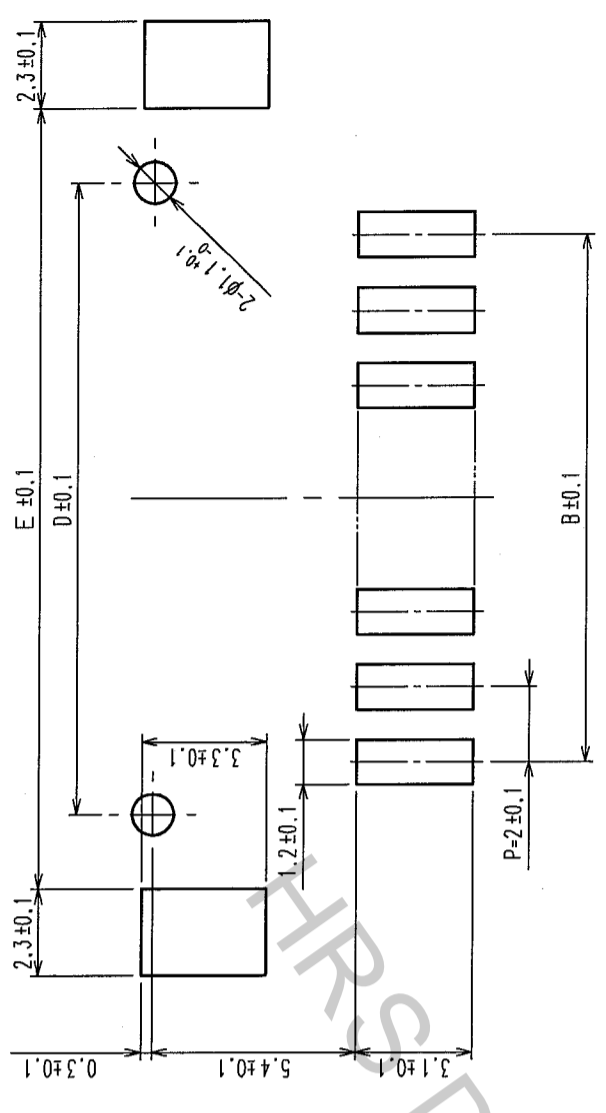


NO.	REVISIONS	BY	CHKD	DATE	COUNT	DESCRIPTION OF REVISIONS	BY	CHKD	DATE
2	RE-H-06617	I.D	T.M	04.11.27					
1									

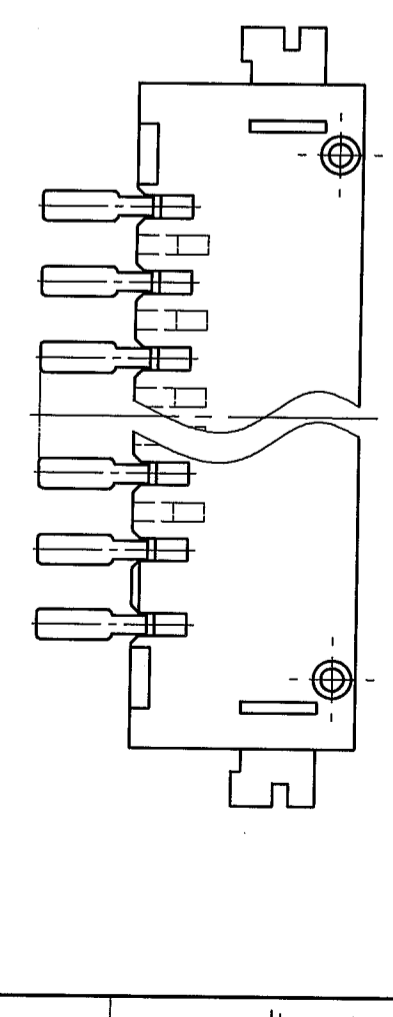
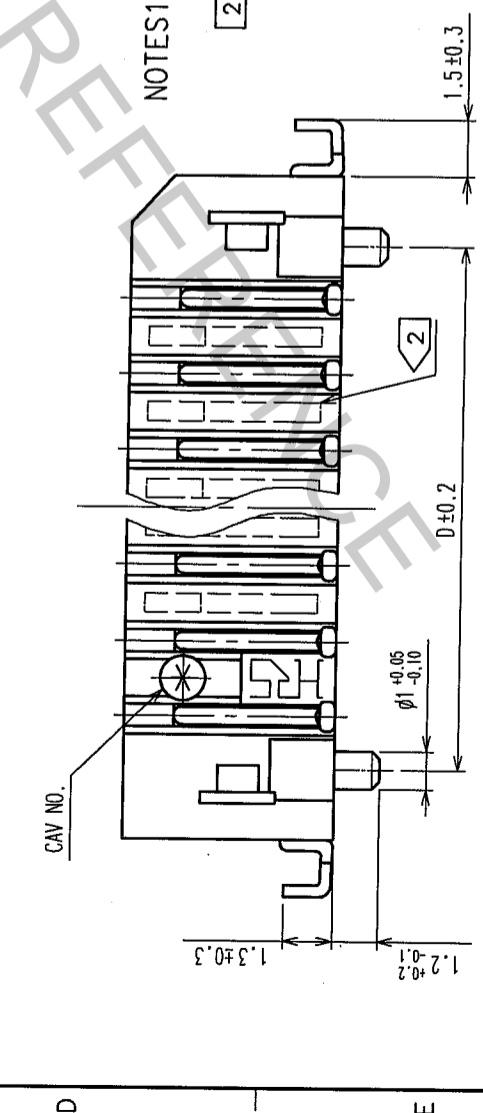
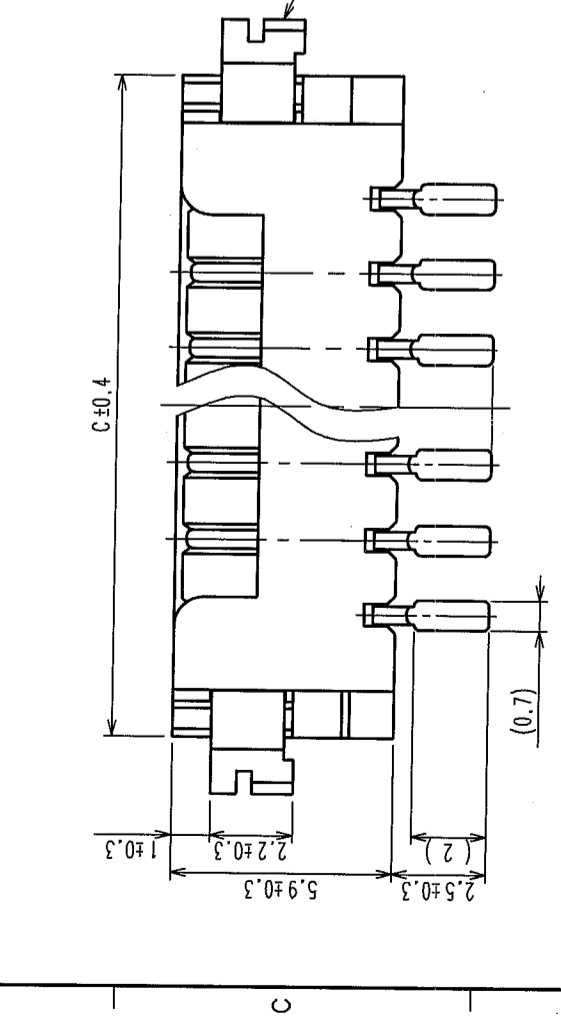
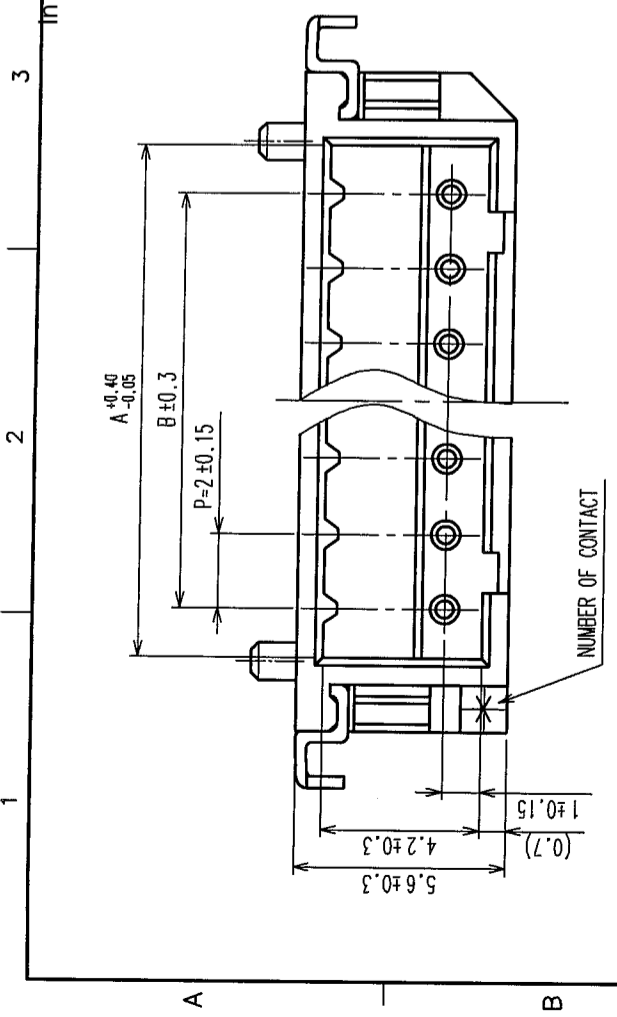
RECOMMENDED PATTERN



PART NO.	CODE NO.	A	B	C	D	E
DF3Z-2P-2H(20)	543-1042-5-20	4.6	2.0	8.5	4.8	8.74
DF3Z-3P-2H(20)	543-1043-8-20	6.6	4.0	10.5	6.8	10.74
DF3Z-4P-2H(20)	543-1044-0-20	8.6	6.0	12.5	8.8	12.74
DF3Z-5P-2H(20)	543-1045-3-20	10.6	8.0	14.5	10.8	14.74
DF3Z-6P-2H(20)	543-1046-6-20	12.6	10.0	16.5	12.8	16.74
DF3Z-7P-2H(20)	543-1047-9-20	14.6	12.0	18.5	14.8	18.74
DF3Z-8P-2H(20)	543-1048-1-20	16.6	14.0	20.5	16.8	20.74
DF3Z-9P-2H(20)	543-1049-4-20	18.6	16.0	22.5	18.8	22.74
DF3Z-10P-2H(20)	543-1050-3-20	20.6	18.0	24.5	20.8	24.74
DF3Z-11P-2H(20)	543-1051-6-20	22.6	20.0	26.5	22.8	26.74
DF3Z-12P-2H(20)	543-1052-9-20	24.6	22.0	28.5	24.8	28.74
DF3Z-13P-2H(20)	543-1053-1-20	26.6	24.0	30.5	26.8	30.74
DF3Z-14P-2H(20)	543-1054-4-20	28.6	26.0	32.5	28.8	32.74
DF3Z-15P-2H(20)	543-1055-7-20	30.6	28.0	34.5	30.8	34.74

NOTES1. LEAD CO-PLANARITY INCLUDE REINFORCED METAL FITTINGS SHALL BE 0.1mm MAX.  
 2. WHEN THE NUMBER OF CONTACT IS 2 TO 10, THIS PART IS FREE FROM SINKAGE INDICATING DOTTED LINES.  
 WHEN THE NUMBER OF CONTACT IS 11 TO 15, THERE ARE SINKAGES INDICATING DOTTED LINES.

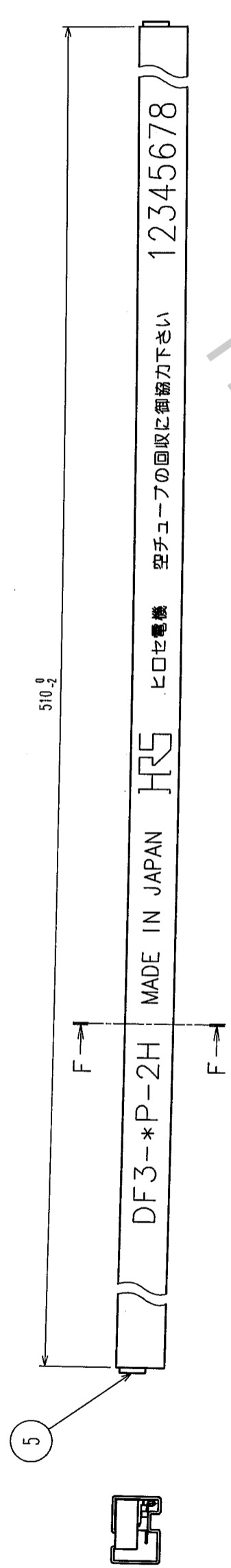
NO.	MATERIAL	FINISH, REMARKS	CL	DRAWN	DESIGNED	CHECKED	APPROVED	RELEASED
2	BRASS	SURFACE:TIN PLATED 1μ m min (UNDER PLATING)COPPER PLATED 0.5μ m min						
1	POLYAMIDE	BEIGE (NATURAL), UL94-0						
NO.	MATERIAL	FINISH, REMARKS	CL	DRAWN	DESIGNED	CHECKED	APPROVED	RELEASED
5	S.PVC	STOPPER, GRAY						
4	RIGID POLYVINYLCHLORIDE	ELECTROSTATIC PROTECTION, CLEAR						
3	BRASS	SURFACE:TIN PLATED 1μ m min (UNDER PLATING)NICKEL PLATED 1μ m min						



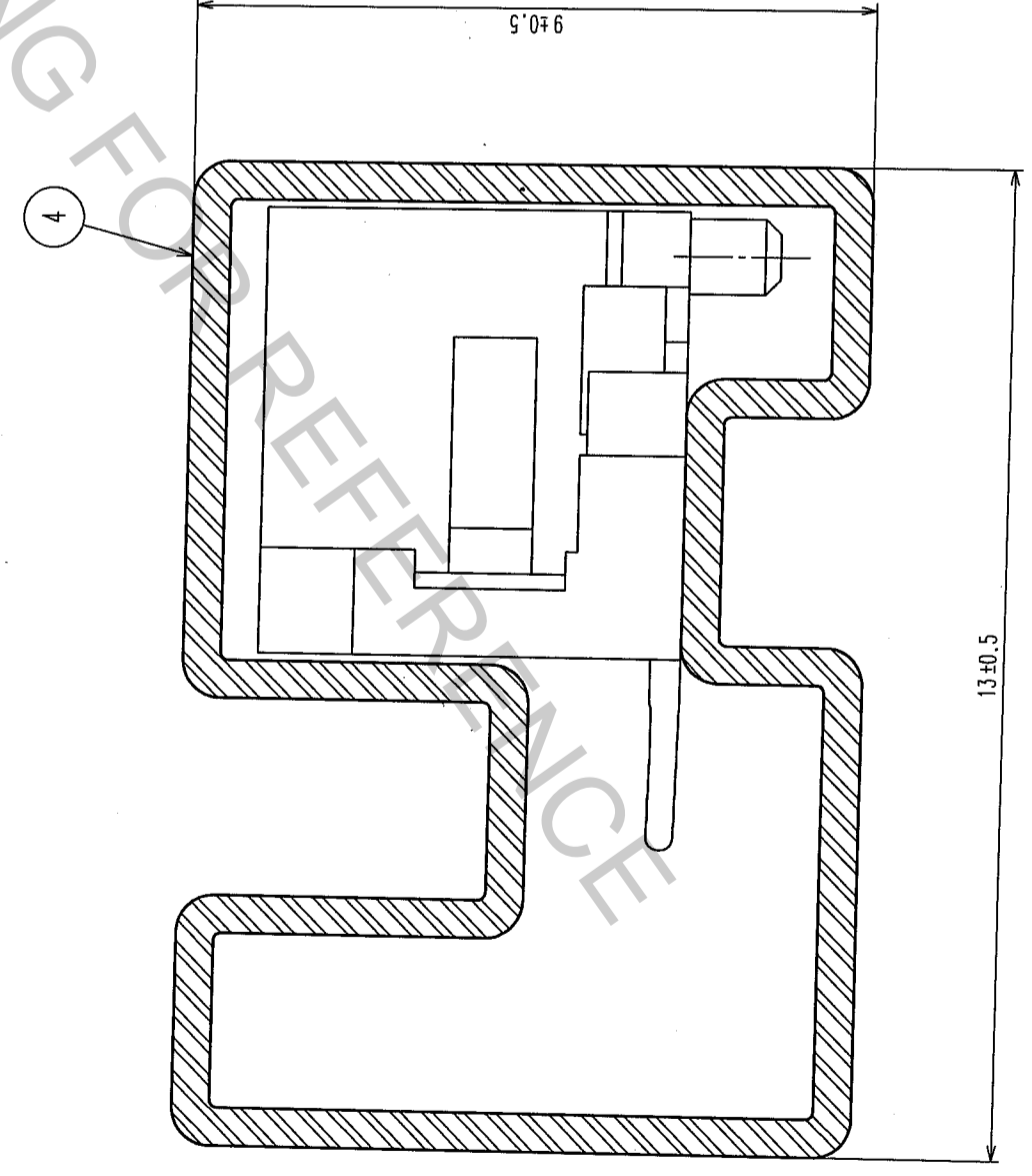
TO

DRAWING NO.	EDC3-305940-10	PART NO.	DF3Z-*P-2H(20)
SCALE	5 : 1	CODE NO.	CL543-
UNITS	MM		

NO.	DATE	BY	CHKD	DESCRIPTION OF REVISIONS	COUNT	DESCRIPTION OF REVISIONS	BY	CHKD	DATE



F-F (10:1)



CODE NO.	PART NO.	NUMBER OF CONNECTORS
543-1042-5-20	DF3Z-2P-2H(20)	41
543-1043-8-20	DF3Z-3P-2H(20)	34
543-1044-0-20	DF3Z-4P-2H(20)	30
543-1045-3-20	DF3Z-5P-2H(20)	26
543-1046-6-20	DF3Z-6P-2H(20)	23
543-1047-9-20	DF3Z-7P-2H(20)	21
543-1048-1-20	DF3Z-8P-2H(20)	19
543-1049-4-20	DF3Z-9P-2H(20)	18
543-1050-3-20	DF3Z-10P-2H(20)	17
543-1051-6-20	DF3Z-11P-2H(20)	15
543-1052-9-20	DF3Z-12P-2H(20)	14
543-1053-1-20	DF3Z-13P-2H(20)	14
543-1054-4-20	DF3Z-14P-2H(20)	13
543-1055-7-20	DF3Z-15P-2H(20)	12

NO.		MATERIAL		FINISH, REMARKS		NO.		MATERIAL		FINISH, REMARKS	
CODE NO. (OLD)		CL				DRAWN		DESIGNED		CHECKED	
						M.Nakamoto		H.Umehara		T.Miyazaki	
						'04.03.25		'04.03.25		'04.03.25	
DRAWING NO.		EDC3-305940-10		PART NO.		DF3Z-*P-2V(20)		APPROVED		RELEASED	
SCALE		FR:EE		UNITS		mm					