



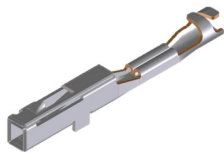
Product Change Notification (PCN)

PCN Number	508922	Date Issued	June 11, 2020
Reason for Change	Capacity change or tool replacement		
Change Type Description	This letter is to inform you that another set of tooling is being added to meet the current and future demands of this product. There will be no changes in the fit, form or function from the additional tooling when compared to the current tooling.		
Reason for Short Notice	New Capacity		
Assessment of Change	Product will be fully qualified before it is shipped. Qualification reports will be available after below listed date		
Internal Molex Qualification Date	July 13, 2020		
Sample Availability Date (Changed Part)	July 13, 2020		
Planned Implementation Date	August 12, 2020		
Method of Identifying Change	Product made after planned implementation date can contain the change		

RELEASED

Before Change

- CTX50 terminal:



After Change

Overview

- Additional capacity is being added to the CTX50 series terminal product line due to high customer demand. The additional capacity will be added specifically for all the tin-plated CTX50 terminals
- Product Impact
 - No impact to fit, form or function
- Part Number Impact
 - 560023-04xx series CTX50 terminals
- Qualification Reports and samples available upon request after date shown above.

1 Molex Confidential Information
© 2016 Molex - All Rights Reserved. Unauthorized Reproduction/Distribution is Prohibited.



2 Molex Confidential Information
© 2016 Molex - All Rights Reserved. Unauthorized Reproduction/Distribution is Prohibited.





Product Change Notification (PCN)

You may address any technical inquiries regarding this PCN by sending E-mail to pcn_coordinator@molex.com or your Local Sales Engineer.

Note: While responding, please retain "**PCN Notification:508922**" in the e-mail Subject line for faster response.

RELEASED

Molex, LLC
2222 Wellington Court
Lisle, IL 60532
TEL: 630-969-4747
www.molex.com

PCN #	Molex Part #
508922	5600230421
508922	5600230444
508922	5600230448